

# Toter®

Built for Extremes™

## MATERIAL HANDLING



## CUBE TRUCKS

Toter's cube trucks are great for collecting and transporting waste. Rugged Rim® technology and durable rotational molded construction means they're built to last. Recessed gripping areas make them easy to maneuver the heaviest loads.

- Load ratings up to 800 lbs.
- Equipped with standard forklift pockets (AMC only).
- Powder-coated frames reduce corrosion, prevent flaking, and ensure long service life.
- Removable split lids available.
- Sizes: 8, 12, 16, and 20 cubic feet.
- Compatible with Universal Lifters (AMC only).



(AMC20)

Part	Description	Size	Dimensions (L x W x H)	Load Rating
MMC08	Heavy-Duty Manual Cube Truck (Manual Unloading)	8 Cubic Feet	36.25" x 25.5" x 28.0"	300 lbs. / 136.1 kg
MMC12	Heavy-Duty Manual Cube Truck (Manual Unloading)	12 Cubic Feet	44.00" x 30.38" x 35.50"	400 lbs. / 181.4 kg
MMC16	Heavy-Duty Manual Cube Truck (Manual Unloading)	16 Cubic Feet	44.00" x 30.38" x 35.50"	500 lbs. / 226.8 kg
MMC20	Heavy-Duty Manual Cube Truck (Manual Unloading)	20 Cubic Feet	49.25" x 32.50" x 36.50"	800 lbs. / 362.9 kg
AMC20	Heavy-Duty Cube Truck With Forklift Pockets (Automated or Manual Unloading)	20 Cubic Feet	49.25" x 32.50" x 38.75"	800 lbs. / 362.9 kg

## Lid Options

Part	Description	Dimensions (L x W x H)
LMC08	Removable Split Lid Fits All 8 Cubic Feet Cube Trucks	37.25" x 27.00" x 6.50"
LMC12	Removable Split Lid Fits All 12 Cubic Feet Cube Trucks	41.75" x 28.75" x 6.50"
LMC16	Removable Split Lid Fits All 16 Cubic Feet Cube Trucks	45.00" x 31.75" x 7.00"
LMC20	Removable Split Lid Fits All 20 Cubic Feet Cube Trucks	50.25" x 33.75" x 7.50"



## TILT TRUCKS

Toter tilt trucks are perfect for moving large, heavy waste to its final disposal area. Powder-coated frames reduce corrosion, prevent flaking, and ensure long service life.



Part	Description	Capacity/Volume	Dimensions (L x W x H)	Wheels	Load Rating
UT005	Utility Duty	1/2 Cubic Yard	54.13" x 32.25" x 36.25"	1-3/4" x 12" / 5"	400 lbs. / 181.4 kg
UT105	Standard Duty	1/2 Cubic Yard	64.38" x 32.25" x 38.38"	2" x 12" / 5"	825 lbs. / 374.2 kg
UT205	Heavy Duty	1/2 Cubic Yard	54.25" x 33.50" x 36.25"	3" x 12" / 5"	1,200 lbs. / 544.3 kg
UT175	Standard Duty	3/4 Cubic Yard	64.75" x 30.00" x 38.38"	2" x 12" / 5"	825 lbs. / 374.2 kg
UT010	Utility Duty	1 Cubic Yard	73.00" x 32.50" x 44.00"	2" x 12" / 5"	825 lbs. / 374.2 kg
UT110	Standard Duty	1 Cubic Yard	73.00" x 32.50" x 44.00"	3" x 12" / 5"	1,200 lbs. / 544.3 kg
UT210	Heavy Duty	1 Cubic Yard	73.00" x 32.50" x 44.00"	3" x 12" / 5"	2,000 lbs. / 907.2 kg
UT115	Standard Duty	1-1/2 Cubic Yards	79.75" x 40.00" x 48.00"	3" x 12" / 5"	1,200 lbs. / 544.3 kg
UT215	Heavy Duty	1-1/2 Cubic Yards	79.75" x 40.00" x 48.00"	3" x 12" / 5"	2,000 lbs. / 907.2 kg

## Lid Options

Part	Description	Dimensions (L x W x H)
LT105	Removable Split Lid for 1/2 Cu. Yd. Tilt Truck	51.75" x 34.00" x 7.00"
LT110	Removable Split Lid for 1 Cu. Yd. Tilt Truck	71.25" x 33.75" x 7.50"
LT115	Removable Split Lid for 1-1/2 Cu. Yd. Tilt Truck	78.25" x 41.00" x 7.75"



Tilt trucks are compatible with Toter's Universal Lifter.



## MOBILE TRUCKS

Toter heavy-duty mobile trucks are perfect for moving large, heavy waste. Constructed with durable plastic, they're lighter than steel models. Powder-coated frames reduce corrosion, prevent flaking, and ensure long service life.



FLM20



AMT10



FLA20

Part	Description	Capacity/Volume	Dimensions (L x W x H)	Wheels/Casters	Load Rating
AM110	Universal Mobile Truck	1 Cubic Yard	58.00" x 33.00" x 44.75"	5", 1 Directional Lock, 3 Swivel; Corner Placement	1,000 lbs. / 453.6 kg
AMT10	Universal Mobile Truck with Pintle Hook Tow Assembly	1 Cubic Yard	58.00" x 33.00" x 45.75"	5", 1 Directional Lock, 3 Swivel; Corner Placement	1,000 lbs. / 453.6 kg
AM120	Universal Mobile Truck	2 Cubic Yard	68.00" x 54.00" x 51.75"	5", 1 Directional Lock, 3 Swivel; Corner Placement	2,300 lbs. / 1043.3 kg
AMT20	Towable Universal Mobile Truck	2 Cubic Yard	68.00" x 54.00" x 52.75"	5", 1 Directional Lock, 3 Swivel; Corner Placement	2,300 lbs. / 1043.3 kg
AMA20	Rapid Speed Mobile Truck (Towable up to 25 mph)	2 Cubic Yard	68.25" x 54.00" x 62.75"	5", 1 Directional Lock, 3 Swivel; Corner Placement	1,500 lbs. / 680.4 kg
FLM20	Mobile Truck with Attached Lid	2 Cubic Yards	75.50" x 44.25" x 52.00"	5" X 2", 1 Directional Lock, 3 Swivel; Corner Placement	2,300 lbs. / 1043.3 kg
FLT20	Mobile Truck with Attached Lid and Pintle Hook Tow Assembly	2 Cubic Yards	78.25" x 44.25" x 52.50"	6", 2 Directional Lock, 2 Swivel; Corner Placement	1,000 lbs. / 453.6 kg
FLA20	Rapid Speed Mobile Truck with Attached Lid (Towable up to 25 mph)	2 Cubic Yards	76.25" x 44.25" x 63.25"	4.75 x 16" Pneumatic Wheels	1,000 lbs. / 453.6 kg
FLA30	Rapid Speed Mobile Truck with Attached Lid (Towable up to 25 mph)	3 Cubic Yards	75.75" x 50.75" x 76.00"	16" Pneumatic Wheels	1,500 lbs. / 680.4 kg

## Lids

Part	Description	Dimensions (L x W x H)
LT105	Removable Split Lid for 1/2 Cu. Yd. Mobile Truck	51.75" x 34.00" x 7.00"
LT110	Removable Split Lid for 1 Cu. Yd. Mobile Truck	71.25" x 33.75" x 7.50"
LT115	Removable Split Lid for 1-1/2 Cu. Yd. Mobile Truck	78.25" x 41.00" x 7.75"



## Special Features



Optional towbars available.



Multiple trucks can be hitched together.



Drain plug for simple clean-out.



Equipped with standard forklift pockets.



Heavy-duty frame is built to last.



Rapid Speed mobile truck has rugged high-speed tires.



Rapid Speed model has durable frame design with pivoting pneumatic wheels for tight turns.

## AVAILABLE COLORS

Toter cans are available in a variety of colors and textures. Granite finishes mask normal wear by helping hide scuffs, scratches, and dirt, keeping cans looking new for years.



BLACK  
(#200)



BLUE  
(#705)



BROWN  
(#270)



GRAY  
(#125)



GREEN  
(#940)



RED  
(#570)



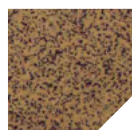
YELLOW  
(#390)



WASTE GREEN  
(#925)



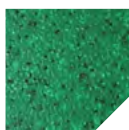
ORGANIC GREEN  
(#780)



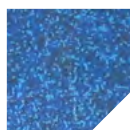
SANDSTONE  
(#249)



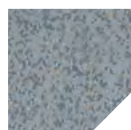
BROWNSTONE  
(#279)



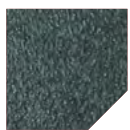
GREEN GRANITE  
(#929)



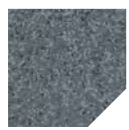
BLUESTONE  
(#709)



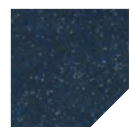
GRAYSTONE  
(#129)



GREENSTONE  
(#968)



DARK GRAY  
GRANITE (#128)



NAVY GRANITE  
(#769)



BLACKSTONE  
(#209)



ORANGE  
(#490)

Colors shown are as accurate as printing allows. Actual product colors are subject to variation from printed sample.



# Toter®

## Built for Extremes™