

Toter Round Cans

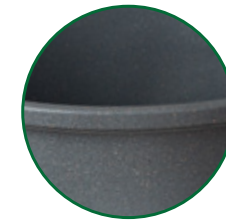


Toter[®]
PRO
Built for Extremes[®]

Built To Last Means Value

The Toter Round Can was designed to withstand heavy and continuous use both indoors and out. Our Advanced Rotational Molding™ manufacturing process eliminates built in stress, weakness, and brittleness that's associated with plastic injection containers, lending itself to a more durable trash can that is engineered for toughness and high impact resistance.

The Toter Round Can is the perfect solution for industrial, construction, food service, healthcare, and institutional environments.



Rugged rim: For added strength.



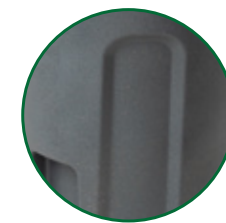
Integrated handles: Aids in lifting of can and improves dumping efficiency.



Bag cinch: Helps keep bag in place.



Unique Third Handle: Allows for easier lifting and emptying.



Venting Channel: Allows easy bag removal.



Drag strips: Increased durability.



Toter Round Can

MODEL#	Description	Width (including handles)	Height	Diameter
RND20	20 gal. Round Container	23.4"	23.2"	19.4"
RND32	32 gal. Round Container	26.5"	27.9"	22.0"
RND44	44 gal. Round Container	28.6"	31.4"	24.0"
RND55	55 gal. Round Container	31.3"	31.4"	26.3"

Accessories



MODEL#	Description
RND20-L	20 gal. Round Lid
RND32-L	32 gal. Round Lid
RND44-L	44 gal. Round Lid
RND55-L	55 gal. Round Lid



MODEL#	Description
DAK10-0000	Dolly Adapter
WDL10-00BLK	Dolly Kit

Colors



Colors and textures shown are as accurate as printing allows. Actual product colors and textures are subject to variation from printed sample. Custom colors available.

