

BEAR TOUGH CARTS



Toter[®]
Built for Extremes[®]

We tell the toughest bears to grin and bear it.

BEAR TOUGH CARTS

Featuring a bear-resistant locking mechanism, Toter's Bear Tough garbage carts are strong enough to withstand repeated clawing and chewing. With a bear-resistant lock, double-walled lid and steel-reinforced rim, Toter Bear Tough garbage carts stand up to the toughest bears.



Bear-resistant lock



Double-walled lid



Steel-reinforced Rugged Rim® for impact resistance

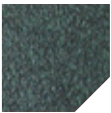
- Manufactured with stress-free Advanced Rotational Molding™ for superior durability
- Contains up to 50% recycled content and is 100% recyclable
- Compatible with fully-automated† and semi-automated waste collection
- Nestable when fully assembled for easy delivery

AVAILABLE IN 32, 64 and 96 GALLON SIZES

| Part | Size | Dimensions (L x W x H) | Wheel Size | Load Rating |
|-------|------------|--------------------------|------------|--------------------|
| 79B32 | 32 Gallons | 24.0" x 19.8" x 37.5" | 8" | 112 lbs. / 50.8 kg |
| 79R64 | 64 Gallons | 31.50" x 24.75" x 42.25" | 10" | 225 lbs. / 102 kg |
| 79R96 | 96 Gallons | 35.50" x 30.25" x 43.75" | 10" | 338 lbs. / 153 kg |

AVAILABLE COLORS

Toter carts are available in a variety of colors and textures. Granite finishes mask normal wear by helping hide scuffs, scratches, and dirt, keeping carts looking new for years.



GREENSTONE
(#968)



BLACKSTONE
(#209)

Colors shown are as accurate as printing allows. Actual product colors are subject to variation from printed sample.

†Only if left unlatched for waste collection

*Limitations apply visit www.wastequip.com/terms-conditions-of-sale for complete limited warranty terms



Certified by the Interagency Grizzly Bear Committee.

Extreme Purpose • Extreme Toughness • Extreme Wear

PO Box 5338
841 Meacham Road
Statesville, NC 28677

704-872-8171
800-424-0422

sales@wastequip.com
www.toter.com
Toter is a Wastequip® brand